

Brochures

These instructions explain how to correctly prepare a print-ready file.

1. FILE FORMAT

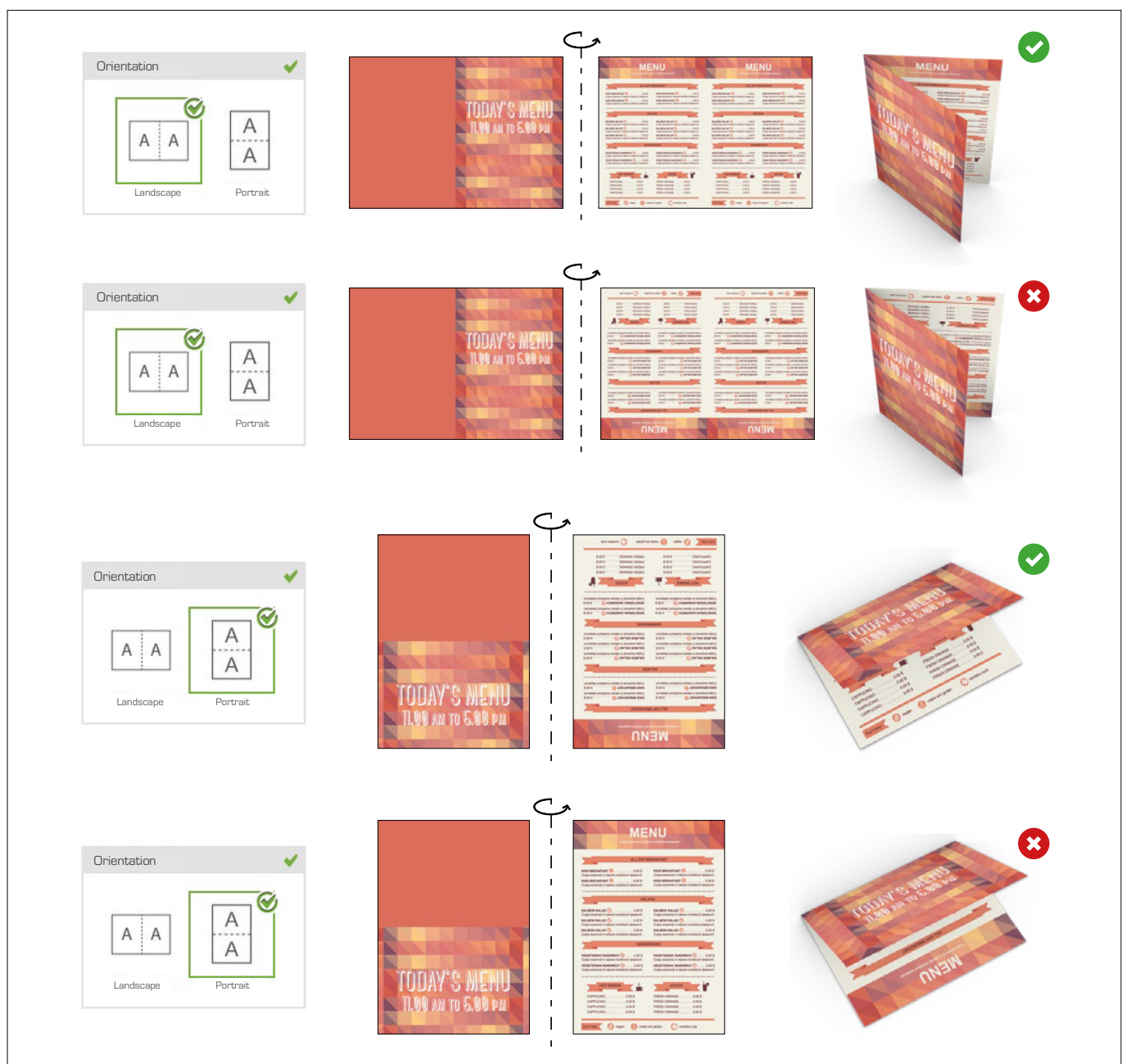
Send your file in PDF format in 1:1 scale (not password protected).

2. PAGE ORIENTATION

The orientation of the pages of the PDF must match the choice made in your order (horizontal or vertical).

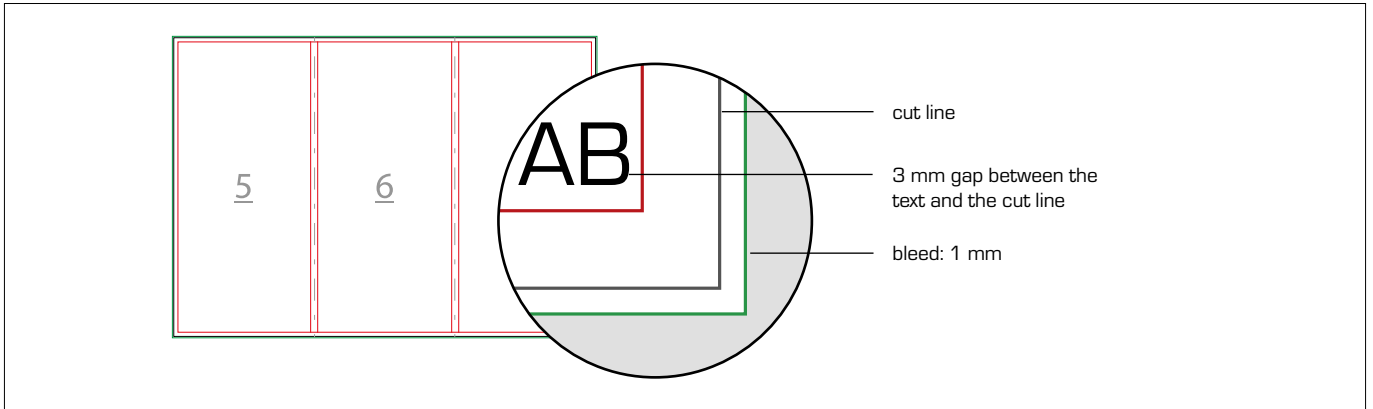
Both pages must have the same orientation. Once you have saved the PDF file, ensure you do not rotate the pages using Acrobat.

PLEASE NOTE: For double-sided printing, the sheet is rotated around its vertical axis, as if turning the pages of a book: bear this in mind when positioning the text, as well as following the orientation chosen in your order.



3. MARGINS AND BLEEDS

This product requires a 1 mm bleed on each side. Text should be placed at least 3 mm from the cut line.



4. RESOLUTION

The optimal resolution for the print files is 300 dpi.

5. COLOURS

All files should be sent in CMYK (cyan, magenta, yellow, black), with the Fogra 39 colour profile. Images in RGB or with PANTONE colours will be converted automatically using a standard colour separation profile.

6. FONTS

Fonts should be embedded in the PDF or converted into curves/paths. The minimum font size (below which we cannot guarantee perfect print quality) is 6 pt.

7. ADDITIONAL INFORMATION

Vector paths should have a weight of at least 0.25 pt. We recommend that you do not place frames or passepartouts too close to the margins, as the tolerance in the cutting process may produce a slightly uneven result.

By default, when overlapping opaque colours are printed, the top colour knocks out the area underneath. Overprinting prevents

